

MANOR ROAD BOTTESFORD
SCUNTHORPE
NORTH LINCOLNSHIRE
DN16 3PB

TEL. NO: 01724 867906
head.bottesfordjuniors@northlincs.gov.uk

ACTING HEADTEACHER: MRS J BURT

Friday 5th December 2025

What a wonderfully festive week it has been for our school community!

Our pupils have been incredibly busy spreading joy and representing Bottesford Junior School in a range of community events. A group of children took part in the Pentathlon Ten Pin Bowling Morning at Ashby Bowl, showcasing fantastic skills and brilliant team spirit. It was a super morning enjoyed by all!

Our school choir has also been particularly active. On Sunday evening, they performed beautifully at the Salvation Army church, and I felt immensely proud watching them sing. A huge thank you to Mr Robson and Miss Arrand for volunteering their time, and organising this special event. The Salvation Army were so impressed that they generously donated £382.50, from the evening's proceedings, to our school — a wonderful contribution that will help us create an enriching opportunity for our pupils.



Our community connections continued as members of our Year 6 choir visited Bottesford Teapot Hall to sing Christmas carols at a local community event. These moments truly highlight the heart of our school: connecting, sharing, and bringing joy to others.

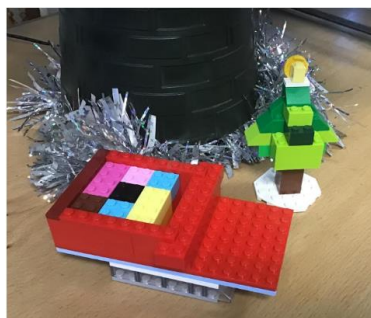
Festivities continued on Tuesday and Wednesday with our school Christmas dinner. A massive thank you to Michelle, Jackie, and Joanna for preparing such a delicious meal for everyone. We were also honoured to host the Mayor of Bottesford and the Town Clerk on Wednesday. They enjoyed chatting with the children and soaking up the

festive atmosphere.



Our pupils further spread Christmas cheer by carol singing at Morrisons, bringing smiles to shoppers and strengthening our links within the community.

I'm also pleased to share some of the creativity we've seen this week. The playground has been brightened by some lovely festive Lego models — a great example of our pupils' imagination and skill. Well done, Louise and Henry!



And finally, a HUGE thank you to everyone for your incredibly generous donations to our bottle raffle. The response was so overwhelming that we needed two raffle wagons to collect all the prizes! Tickets go on sale on Wednesday 10th December.

These moments remind us just how special our school community is — vibrant, supportive, and always ready to come together in celebration. THANK YOU!

Supporting Children's Anxiety FREE Workshop

On Tuesday, 27th January 2026, Bottesford Infant School will be hosting a 'Supporting Children's Anxiety' workshop. The workshop runs for 2 hours and covers what anxiety is, how it feels to a child and how it may present itself. They will also look at brain development, emotional resilience and how parents and carers can support their children.

This workshop will be delivered by North Lincolnshire Council. It is open to both Infant and Junior families and will be held on the Infant School site on Tuesday, 27th January 2026 from 13:15 to 15:15.

If you are interested and would like to book a place please complete the following form

- <https://forms.gle/nNC1pu8ocAzNDizE8>

Please see poster attached.

Christmas concerts

Don't forget to order your tickets on ParentPay – two tickets per family. Please check that you have ordered tickets for the correct performance. If there are any spare tickets available we will send a message out via Arbor the day before.

Water bottles

Can we please remind parents/carers to provide their child with a water bottle for School.

Weather changes

Now that the weather has changed a little, can we please ask that all children bring a warm coat to school every day. Can we also ask that children have a spare pair of socks in their school bags in case of rain.

Community Parking:

We have been asked to politely remind drivers who use the Village Hall Car Park to park considerately. Unfortunately cars have been parked in places that are not designated, which is causing an issue for other drivers and a potential hazard for children. We have also had reports of children using the carpark as a play area. Thank you for your cooperation.

Mobile phones/devices:

We understand that in some cases, it may be necessary for your child to bring a mobile phone to school, for example, if they are travelling to and from school independently. However, we have noticed an increasing

number of pupils bringing their phones to school unnecessarily, without a valid reason. As such, we would like to remind all parents and carers that mobile phones should only be brought to school if they are absolutely necessary. Pupils who do not have a valid reason to bring a phone to school should leave them at home. If your child does need to bring a mobile phone to school, it must be switched off at the school gates on Manor Road.

Unfortunately, we have seen an increase in pupils using their mobiles on the school premises on their way in/out of school – this breaches the signed mobile phone agreement. Can we please ask you to remind the children that they must have their phone turned off whilst on the school site.

By working together, we can ensure that our school remains a safe and focused learning environment, free from the distractions and potential issues that can arise from the use of mobile phones.

Clubs until Wednesday 10th December:

MONDAY	Y5/6 CHEERLEADING	3.25 – 4.15
MONDAY	DODGEBALL – ALL YEARS	3.25 – 4.15
TUESDAY	Y5 COOKERY	3.25 – 4.30
TUESDAY	Y3/4 FOOTBALL	3.25 – 4.15
TUESDAY	GIRLS FOOTBALL – ALL YEARS	3.25 – 4.15
WEDNESDAY	Y5/6 FOOTBALL	3.25 – 4.15
WEDNESDAY	Y6 ART	3.25 – 4.15

Attendance:

All children of primary school age are expected to achieve the government's national expectation for primary schools, which is 96% attendance. The list below shows the approximate attendance figures:

- 1 day off in a 6 week period = 96.5% attendance
- 2 days off in a 6 week period = 93% attendance
- 3 days off in a 6 week period = 90% attendance
- 4 days off in a 6 week period = 86.5% attendance
- 10 days off in a school year = 85% attendance

We are committed to providing a high-quality education for all of our children. In order for a child to reach their full potential, it is essential that their attendance is of a very high level. For this reason, holidays in term time are classed as unauthorised. A leave of absence form must be filled in, and returned to the office for all term-time leave. Please be aware that the Education Inclusion Service may issue a Penalty Notice or prosecution to multiple responsible adults with whom the child resides, regardless of circumstances. The Department for Education have updated the guidance related to school attendance which came into effect on 19th August 2024:

[https://assets.publishing.service.gov.uk/media/65f1b048133c22b8eecd38f7/Working_together_to_improve_school_attendance_applies_from_19_August_2024 .pdf](https://assets.publishing.service.gov.uk/media/65f1b048133c22b8eecd38f7/Working_together_to_improve_school_attendance_applies_from_19_August_2024.pdf)

Community News (All posters below):

North Lindsey College – Christmas Cracker event

Scunthorpe Theatres – The Big North Lincolnshire Talent Show
North Lincolnshire Council – Walk to school scheme
North Lincolnshire Council – EA Sports parent info leaflet
Northlincs Council – HAF Filled
Waters Edge – Mini Mallards
North Lincs Council – Dealing with traumatic and challenging events

Parent/Carer data

Please remember to keep us updated with any changes that may be needed for your child's file. You can make changes to your (and your child's) information via your Arbor account. Alternatively, you can inform the school office admin.bottesfordjuniors@northlincs.gov.uk

Childcare:

Here are the details for the wraparound providers that serve our local schools.

After Bell Club - 07505675454
Little Imps - 01724 761316
Emma Cobb - 07812 567 594
Natalie Watson - 07738 015 976

Dates for your diary so far (subject to change if the need arises):

Monday 8th December – Year 5 Planetarium visit
Monday 8th December – Year 3 Mosque visit
Wednesday 10th December – Performance Day 1 (9.30 Manor & Knight / 2.30 Saxon & Templar)
Thursday 11th December – Performance Day 2 (9.30 Saxon & Templar / 2.30 Manor & Knight)
Friday 12th December – Choir singing at Morrisons
Monday 15th December – Year 3 Christmas Party
Tuesday 16th December – Year 4 Christmas Party
Wednesday 17th December – Year 5 Christmas Party
Wednesday 17th December – Christmas 'Bottle' Raffle Draw takes place
Thursday 18th December – Year 6 Christmas Party
Friday 19th December – Christmas Jumper Day
Friday 19th December – Carols on the Yard, 3.10 – 3.25pm
Friday 19th December – School closes for Christmas
Monday 5th January – School re-opens to pupils

Jenny Burt
Acting Headteacher

NHS Pharmacy First Service

Did you know that the NHS Pharmacy First Service enables children and adults to get convenient access to healthcare advice and treatment where appropriate, for seven common conditions without the potential delay of having to wait for a GP appointment? Accessing the service may mean that we can help children feel better and get back to school as quickly as possible, as well as supporting parents/carers to also get better if they are unwell with one of the conditions covered under the service.

There is no need to make an appointment; parents or carers can pop into their local Boots pharmacy with their child and ask for help under the service.

Support for the following conditions can be accessed under the service, free of charge (unless NHS prescription charges apply):

Common condition	Patient eligibility
Earache	1 to 17 years
Impetigo	1 year and over
Infected insect bites and stings	1 year and over
Sore throats	5 years and over
Sinusitis	12 years and over
Uncomplicated urinary tract	Women 16 to 64 years
Shingles	18 years and over

**DITCH THE CAR IF
IT'S NOT THAT FAR**



Introduce walking into your daily routine

Go to www.northlincs.gov.uk/walk-to-school for links, tips and information

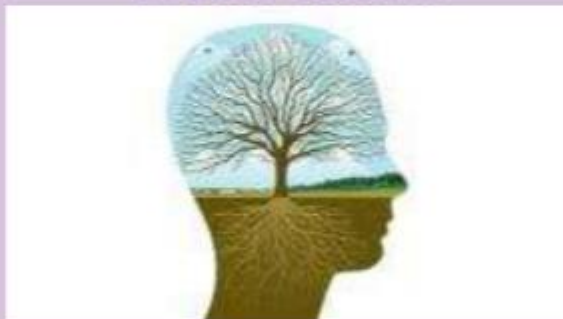
SUPPORTING CHILDREN'S EMOTIONAL WELL BEING



Supporting Children's Anxiety **FREE Workshop**

Learn how to identify and support children's anxiety and promote good mental health and wellbeing.

Gain ideas on how to develop your children's resilience and self-esteem.



Tuesday 27th January 2026, 1.15pm-3.15pm.
Bottesford Infants School, Manor Road, DN16 3PB

Please book your place in school with the admin team

Or complete the Google form at - <https://forms.gle/4YW46F1B5Zb4Weeo6>








**North
Lincolnshire
Council**

CHRISTMAS CRACKER EVENT

Free to all
Book via
QR code
Ticket Required

Children's University are hosting the
Christmas Cracker Event at UCNL on the
11th December 4pm-7pm.

-  Visit to Santa
-  Gift Stalls
-  Tombola (cash required)
-  Refreshments to purchase
-  Lots of Crafts and Activities

Contact rachael.benstead@dncolleges.ac.uk
for details of our school SEND sessions



North Lincolnshire Children's University are hosting a FREE Christmas activity evening for families on the 11th December 4-7pm

There will be all sorts of things to do including carol singing, a visit to Father Christmas and we're reliably informed the Grinch is bringing snow!

Tickets must be booked using this form [Children's University Christmas Cracker @ UCNL – Fill in form](#)

This can also be accessed via the QR code on the attached poster.

This is open to all families across North Lincolnshire and promises to be lots of fun.

What Parents & Educators Need to Know about EA SPORTS FC 26

AGE RESTRICTION
PEGI
3

WHAT ARE THE RISKS?

AN ANNUAL RELEASE SCHEDULE

As was the case with the last two EA Sports FC games and the FIFA series before it, the franchise rolls out once a year with updated squads and new features. This can make it expensive to keep up with, particularly when so many dedicated players are keen to get their hands on the latest edition.

VOICE CHAT

Voice chat can be enabled across all platforms, meaning young people can speak to anyone they play with or against. While it can be switched off, some children will no doubt want to speak to their friends while they play. This also means they may encounter strangers much older than them, which can expose them to inappropriate language or behaviours.

IN-GAME PURCHASES THROUGH ULTIMATE TEAM

Ultimate Team is the big draw for EA Sports FC, letting players spend real money on packs that they can open to build a squad of the world's best players. They're not always easy to obtain, and new, improved versions of players will be regularly added as limited-time offerings. Young people could feel pressured into spending money and experience fear of missing out.

SCAMMERS IN ULTIMATE TEAM

Ultimate Team is managed by EA itself, but that hasn't stopped scammers from looking to dupe players out of money and in-game coins. Some scammers sell their accounts, which is a violation of EA's terms of service, while others will 'sell' coins – something the developer is still working to crack down on. Some try to gain access to others' accounts, potentially giving them access to payment information.

POTENTIAL FOR ADDICTION

While EA Sports FC is potentially addictive, thanks to its fast-paced gameplay and mirroring of the real-world skill and glamour of football, Ultimate Team's focus on limited-time rewards and the lottery of winning packs can make it feel closer to gambling than gaming, which may lead to addiction and impulsive spending of money.

Advice for Parents & Educators

PREPARE FOR ANOTHER GAME IN A YEAR

The annual-release cadence aligns with the return of the school year, and can be a great way to incentivise good behaviour at the start of term. If children are applying themselves and preparing for a new year of school, or were particularly well behaved in the summer, EA Sports FC 26 could make a great reward.

LIMIT SPENDING

If you're worried about children accidentally spending real money in Ultimate Team, whether in game or on the EA Sports FC companion app, don't link a payment card to their account. Reclaiming funds can be a mountain to climb, and the dopamine hit of opening flashy packs with slick animations means one purchase can lead to another very quickly. It's also worth adding a prepaid card if you'd prefer them to make their own choices with their budget.

MONITOR VOICE CHAT

As in-game chat is open, be sure to adjust the settings in EA Sports FC 26 to lock it down. If children want to chat with their friends while they play, consider setting up a safe space for them to chat, to allow them to play without fear of outsiders.

BE VIGILANT

As with last year, there are ways to keep scammers at bay. Ensure passwords are locked down, and consider using a password manager application to keep them secure. EA will never contact players through the game itself, so be vigilant with incoming messages, and block and report suspected spam. EA will contact players by email if needed, but they will never ask for usernames or passwords. Players should also avoid buying in-game currency from unofficial websites – doing so can lead to accounts being banned and could cost players money in the process.

Meet Our Expert

Lloyd Coombes is an experienced freelance writer and has been working in the gaming and tech industry for seven years. A regular visitor to the App Store to try out new tools, he's also a parent and therefore understands the importance of online safety. He's also a tech and fitness writer and has been published at sites including IGN, TechRadar, and plenty more.



The National College

Source: 300 full reference list on guide page at: <https://nationalcollege.com/guides/ea-sports-fc-26>

X @wake_up_weds

f /www.thenationalcollege

@wake.up.wednesday

@wake.up.weds

Users of this guide do so at their own discretion. No liability is entered into. Current as of the date of release: 01.10.2025

Waters' Edge

mini mallards

themed play sessions for tots

**Come join us every
other Wednesday or
Thursday in term time
10am-11.30am.**

**Crafty, sensory fun
and a short trail
through the grounds.**

Upcoming dates;
3rd & 4th September
17th & 18th September
1st & 2nd October
15th & 16th October
5th & 6th November
19th & 20th November
3rd & 4th December
17th & 18th December

**Booking is essential, using
the contact details below.**



**£3
per child**

Waters' Edge Country Park
Maltkiln Road, Barton Upon Humber, DN18 5JR
waters.edge@northlincs.gov.uk
01652 631500



@WatersEdgeCountryPark



Waters' Edge Country Park

**North
Lincolnshire
Council**



www.uniform-direct.com



Official School Uniform Suppliers for

Bottesford Junior School



Navy Sweatshirt with Logo	from £8.00
Navy Cardigan with Logo	from £9.00
White Polo Shirt with Logo	from £7.00
Grey or Black Trousers	from £6.00
Grey or Black Skirts	from £7.00
Sky Blue PE Hoodie with Logo	from £16.00
Sky Blue PE T-Shirt with Logo	from £5.50
Navy Deluxe Bookbag with Logo	£7.00
Navy PE Bag with Logo	£4.50
Black or Navy PE Shorts	from £4.00



Order your School Uniform **Online** at www.uniform-direct.com
Visit us **in store** Uniform Direct, Market Street, **Gainsborough**
Ordering for **September**? - [Allow plenty of time](#) ✓ Order Now

✓ April-June Best time to order

✓ July Expect Delays

✗ Aug-Sept Extreme Delays
We guarantee for back to school



www.shahsuniform.co.uk

109 -111 West St, Scunthorpe DN15 6HX

Official School Uniform Supplier for: Bottesford Junior School

Navy Sweatshirt	£13.99
Navy Cardigan	£15.99
Polo Shirt	<i>from</i> £8.99
P.E T-shirt	<i>from</i> £6.99
P.E Hoodie	£16.99
P.E Shorts	<i>from</i> £4.99
Red Sweatshirt	<i>from</i> £11.99
Red Cardigan	<i>from</i> £13.50
Bookbag	<i>from</i> 6.99
P.E Bag <i>including zip pocket</i>	£8.50
Grey or Black Trousers	<i>from</i> £7.99
Grey or Black Skirts	<i>from</i> £7.99

All uniform is **available in store and online** -
Payment plan available online



ATTENDANCE

WHAT THE NEW RULES MEAN FOR ME

1

I'm a single parent of one child and we want to go on holiday for a week.

Your holiday will not be authorised and you must talk to the school before you book anything.
Because your child will miss 5 school days you will be given a penalty notice fine.
The fine is £160 but if you pay it in 21 days it will be reduced to £80.

£160



2

FOR EVERY CHILD A PENALTY IS GIVEN.



+ £160 + £160 + £160 + £160

4 children & 1 parent = £640

Reduced to £320 if paid in 21 days

IRREGULAR ATTENDANCE

10 IN 10

5

If your child is absent for 10 or more sessions in 10 weeks and their absences are unauthorised. The school will consider prosecution.

1 Day = 2 Sessions

3

FOR A FAMILY OF TWO PARENTS



+ £160 + £160 + £160 + £160

4 children & 2 parents = £1280

Reduced to £640 if paid in 21 days



4

If in any period of not more than 3 years, your child has a 2nd and 3rd leave of absence or pattern of irregular attendance...

2ND TIME

2 parents and
1 child = £320
2 children = 640
3 children = 960
4 children = 1280

No discount for early payment



3RD TIME

A penalty notice fine will not be given. Instead, your case will be taken to court.

A magistrate can fine each parent £2500 for each child

1 parent & 4 children = £10,000
2 parents & 4 children = £20,000

10 Top Tips for Parents and Educators DEALING WITH TRAUMATIC & CHALLENGING EVENTS

Children and young people may face a wide range of traumatic or challenging events – from bereavement and illness to bullying, family breakdowns, or witnessing violence. These experiences can affect their mental health, behaviour, relationships, and academic progress. With the right support from trusted adults, children can begin to feel safe, rebuild resilience, and develop healthy coping strategies. This guide offers practical and empathetic ways to provide support and promote positive outcomes.

1 A PREDICTABLE ENVIRONMENT

Children who have experienced trauma often feel unsafe or uncertain. Creating routines, setting clear expectations, and maintaining consistency can help restore a sense of security. This structure offers reassurance and helps children feel more in control of their surroundings.

2 USE LANGUAGE THAT MATCHES THEIR AGE

Speak clearly and sensitively, choosing words that are appropriate for the child's age. Avoid overwhelming them with too much information at once. Offer gentle, honest explanations and focus on reassurance, especially when talking about difficult or sensitive subjects.

3 TRAUMA AND THE BODY

Mention briefly that trauma can show up in physical ways, such as changes in sleep, appetite, concentration, or as physical aches and pains. Consider this before labelling behaviour as 'difficult' or 'lazy'. Some children may become withdrawn, while others may be more outwardly challenging. Highlight that there's no 'one-way' children respond.

4 AVOID RETELLING OR RELIVING TRAUMA

Children sometimes get asked to explain or repeat their experience multiple times. Striking a balance of when to listen and when to gently redirect can help to avoid unnecessary re-traumatisation. Acknowledge, but don't probe for detail unless safeguarding procedures require it.

5 AVOID DISMISSING OR MINIMISING FEELINGS

Seemingly well-meaning comments like "It's not that bad" or "You're okay" may shut down children's emotional expression and are often not helpful. Instead, acknowledge what they're feeling, even if it seems small. Validating a child's emotions helps them feel seen and encourages open communication in future.

6 UNDERSTAND HOW THEY'RE FEELING

Many children don't have the words to express their emotions, especially during distress. Supporting them to name what they're feeling – such as angry, scared or sad – builds emotional literacy. Tools like emotion charts, drawing, or storytelling can help externalise feelings in a safe, manageable way.

7 BE AWARE OF YOUR OWN RESPONSES

Children pick up on adult emotions and reactions, often mirroring them. Staying calm, even in challenging situations, helps children feel more secure. Practising your own self-regulation is an important way to model healthy stress management and encourages children to do the same.

8 SEEK PROFESSIONAL SUPPORT

While many children benefit from everyday emotional support, some will need more specialised help. If symptoms persist, worsen, or disrupt their daily life, consult with school safeguarding leads, a GP, or a mental health professional. Early intervention can prevent long-term difficulties and support healthy recovery.

9 MAINTAIN CONNECTION

Isolation can worsen the impact of trauma. Encourage involvement in group activities, praise their efforts, and ensure they feel like a valued part of the school or family community. Meaningful connection with trusted adults and peers builds resilience and a sense of belonging.

10 BE PATIENT – HEALING TAKES TIME

There's no quick fix for emotional recovery. Children may have good days and setbacks, and progress may not always be visible or linear. Your ongoing support, patience, and presence can help them move forward at their own pace, knowing they are not alone.

Meet Our Expert

This guide has been written by Anna Bateman. Anna is passionate about placing prevention at the heart of every school by integrating mental wellbeing within the curriculum, school culture, and systems. She has been a member of the advisory group for the Department for Education, advising them on their mental health green paper.



The National College

X @wake_up_weds

f /www.thenationalcollege

@wake.up.wednesday

@wake.up.weds

Users of this guide do so at their own discretion. No liability is entered into. Current as of the date of release: 08.10.2025

FUELLED

NORTH LINCOLNSHIRE

It's the Winter holidays and Fuelled is back with activities for young people with SEND.

SAFE Equestrian is putting a festive spin their recently launched 1:1 horse riding activity in **Winterton**. Please remember that this is a specialist 1:1 activity for young people with SEND and you should contact the provider before booking (Ages 6-16).

Do your children love Pokemon? Head over to **Ashby for Lincolnshire Educational Support's** Pokemon Go Exploration days! Get ready to walk, catch and explore with an exciting Pokemon GO activity week that combines tech and outdoor fun (Ages 8-16).

Join the team at **Isle Ride to Recover** (based in **Belton** at Avalon Mill) for gentle pony rides, grooming horses, feeding and animal care. It is a calm, supportive environment where children can build confidence, develop new skills, and enjoy time with our friendly ponies at their own pace. Activities have lower ratios and are for children with SEND (Ages 6-16).

We also have **pantomime tickets** and **activity packs** available to book on our website too. Make sure to check them out!

Limited places available, bookings open 2nd of December at 1pm!
To book onto an activity scan the QR code below.

The Fuelled HAF Programme is funded by the Department for Education. We offer activities and food for school-aged children who receive benefits-related free school meals. To find out more, head over to www.northlincs.gov.uk/fuelled or scan the QR code to go straight to our booking platform. Some providers also have free or paid places for non-eligible children which can be booked on the same website.



Department
for Education

**North
Lincolnshire
Council**

FUELLED

NORTH LINCOLNSHIRE

It's the Winter holidays and Fuelled is back with activities in Riddings, Bottesford and Ashby!

First Step Sports is bringing their popular Sports & Activities Club to **KPAC in Riddings** this Christmas! Expect a fun-filled mix of sports and creative activities to keep children engaged and smiling throughout the festive season (Ages 4-11).

Celebrate the season at the **After Bell Club** Christmas activities in **Bottesford**! Enjoy a Christmas Disco and a Christmas party with visits from a few guests you may recognise (ages 4-8).

The Dancing Tiger Scrap Store will be hosting a Puppet show with the Way at **Connect Church on Ashby Road**, as well as plenty of Christmas craft making (ages 7-16).

We also have **pantomime tickets** and **activity packs** available to book on our website too. Make sure to check them out!

Limited places available, bookings open 2nd of December at 1pm!
To book onto an activity scan the QR code below.

The Fuelled HAF Programme is funded by the Department for Education. We offer activities and food for school-aged children who receive benefits-related free school meals. To find out more, head over to www.northlincs.gov.uk/fuelled or scan the QR code to go straight to our booking platform. Some providers also have free or paid places for non-eligible children which can be booked on the same website.



Department
for Education

**North
Lincolnshire**
Council



FUELLED NORTH LINCOLNSHIRE

The Fuelled HAF Programme is back this Winter!

We have plenty of activities on offer from football and pottery painting to roller disco's and bowling trips. We also have a pantomime and activity pack offer.

Head over to our website for more information and a link to our booking system and remember, all activities come with a healthy nutritious meal.

The Fuelled HAF Programme is funded by the Department for Education to provide activities and food for school-aged children in receipt of benefits-related free school meals.

For more information please visit:
www.northlincs.gov.uk/fuelled


Department
for Education

**North
Lincolnshire
Council**
www.northlincs.gov.uk